

POWER HEAT CONTROL VALVE

The power heat valve, located between the right exhaust manifold and exhaust pipe, is a vacuum operated device which directs the majority of exhaust gas flow through the left-hand exhaust manifold.

An engine mounted coolant switch (CCEVS) controls the manifold vacuum signal necessary to activate the heat valve. At coolant temperatures below a predetermined level, manifold vacuum is applied to the heat valve and all exhaust gas flow is directed to the left-hand exhaust manifold. Above this temperature no vacuum signal is applied to the heat valve and exhaust gas flow proceeds through both the right-hand and left-hand manifolds.

AIR INJECTION PUMP

6 Cylinder Engines

Removal

(1) Remove air and vacuum hoses from the diverter valve.

(2) Loosen air pump pivot and adjusting bolts, and remove belt. On vehicles equipped with air conditioning, loosen power steering pivot and adjusting bolts and remove belt.

(3) Remove air pump pulley and air pump at-

taching bolts and remove air pump and diverter valve as an assembly.

(4) Remove diverter valve from air pump.

Installation

(1) Install diverter valve to air pump.

(2) Position pump assembly on engine and install air pump bracket attachment bolts loosely. Install the air hose to diverter valve outlet.

(3) Install air pump pulley on air pump. Tighten screws to 95 inch pounds.

(4) On vehicles equipped with air conditioning, tighten bracket attachment screws to 30 foot-pounds MAXIMUM.

(5) Install drive belt and adjust. **Do not, under any conditions, pry on the housing.** See "Cooling System," Group 7. Tighten power steering pivot and adjusting bolts to 30 foot pounds.

(6) Reinstall vacuum hose to diverter valve.

8 Cylinder Engines

Removal

(1) Remove air hose from air pump outlet elbow.

(2) Loosen air pump pivot and adjusting bolts and remove belt.

(3) Remove pivot and adjusting belts from pump brackets and remove pump pulley and brackets as on assembly.

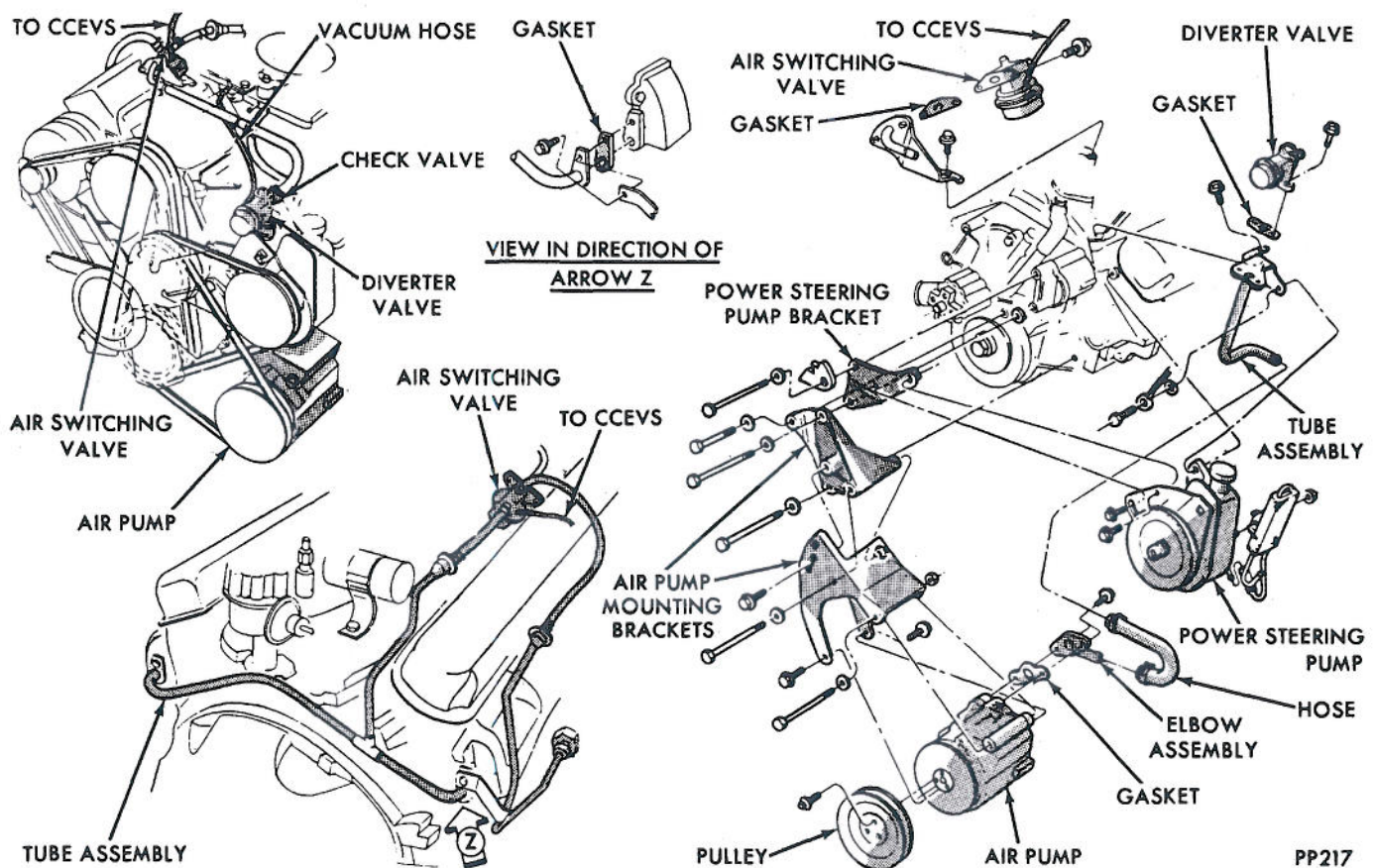


Fig. 7—Air Injection System Installation for 318 and 360 CID Engines

PP217