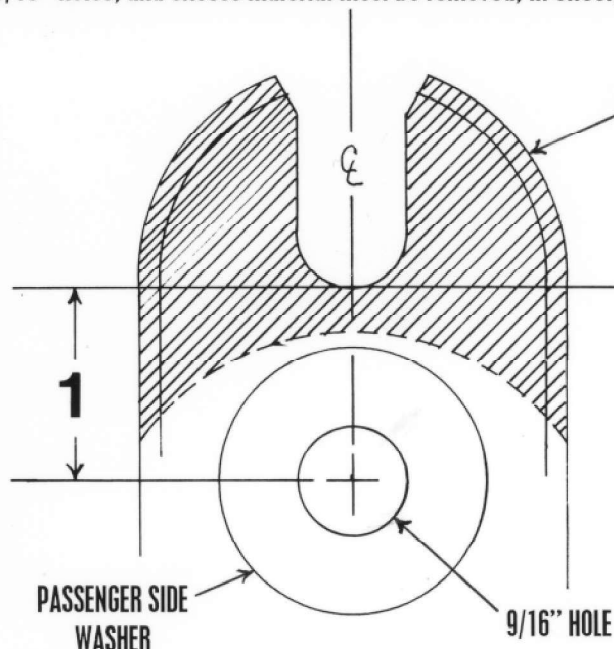


The driver's side mounting perch on the 73 & up K-member is 2 3/8" taller than on the V8 K-member, and therefore interferes with any V8 block. To eliminate this problem while positioning the engine to factory specs and retaining a true bullet-proof design, the driver's side engine mounting perch needs to be drilled with 9/16" holes, and excess material must be removed; in effect, lowering it.



Left-hand, or driver's side, engine mounting perch

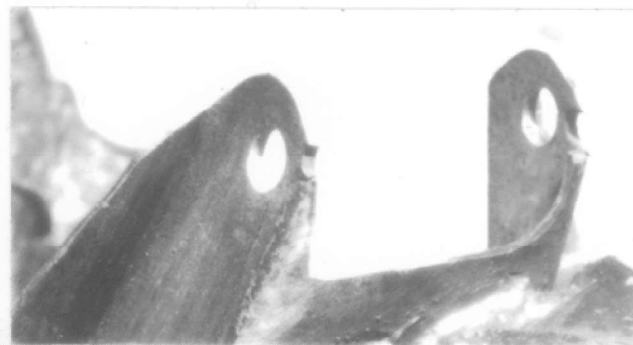


REMOVE MATERIAL FROM SHADED AREA

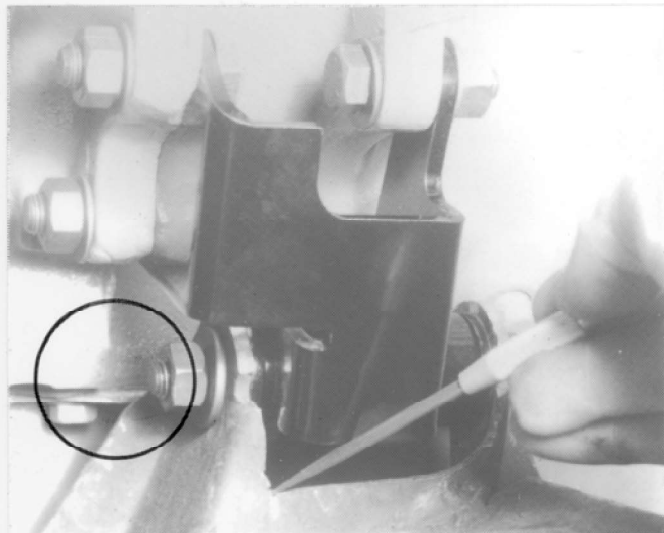
Drawing is actual size and can be used as a template. Passenger side washer can also be used as a guide for material removal.



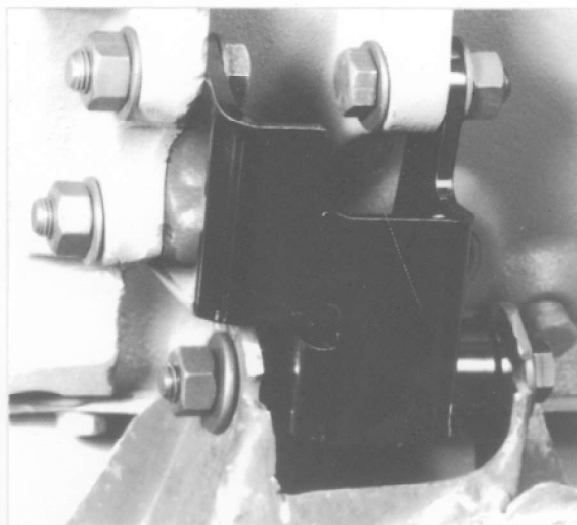
- 1** Measure 1" from the bottom of existing slot and drill a 9/16" hole. Greater accuracy can be achieved by drilling pilot holes first and then gradually increasing the size, i.e.; 1/8", 1/4", 3/8", 1/2", 9/16".



- 2** Remove material as shown. Round edges for bracket and engine boss clearance. In the example shown I used a cut-off wheel and then a die grinder to round corners and deburr. A sawzall can also be used.



Additional material was removed for bracket clearance.



How it works. Note: 73-76 A-body shown. Other models