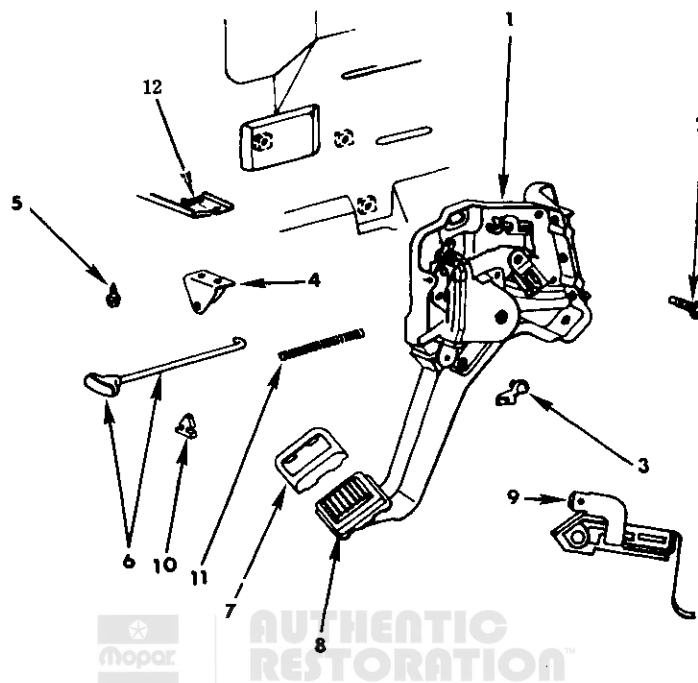


1979 PASSENGER CAR PARTS CATALOG

BRAKE, PARKING

9104 200

PARKING BRAKE LEVER - H,N,F,G



ITEM	PART NUMBER	QTY.	MODEL	DESCRIPTION
1	4019 369	1	All	LEVER, Park Brake
2	0181 088	3	All	SCREW w/WASHER, Lever Att.
3	3454 220	1	All	CLIP, Lever Rel. Rod
4	4019 545	1	All	BEZEL, Rel. Rod
5		2	All	SCREW (Not Serv.)
6	4019 543	1	All	ROD, w/KNOB, Lever Rel.
7	2467 513	1	All	BEZEL, Pedal Pad
8	2467 514	1	All	PAD, Pedal
9	3747 327	1	All	SWITCH, Park Brake
10	4094 114	1	All	BUMPER, Lever Ret.
11	4094 113	1	All	SPRING, Rel. Rod
12		1	All	REINF.Inst.Panel (Ref.Only)

MODEL CODES: (CAR LINES)	M=Horizon Z=Omni	H=Volare N=Aspen	F=Le Baron G=Diplomat	X=Magnum XE S=Cordoba	E=St Regis T=Newport/New Yorker
-----------------------------	---------------------	---------------------	--------------------------	--------------------------	------------------------------------

BODY STYLES:	22=2-Door Special Coupe 42=4-Door Pillared Hardtop	24=2-Door Hatchback 44=4-Door Hatchback	29=2-Door Special Coupe 45=2-Seat Station Wagon	41=4-Door Sedan
-----------------	---	--	--	-----------------

AR=Use as Required

=New Part Number

Printed in U.S.A.

June, 1979