

Fig. 19—Shift Lever Installation

(2) Position the bearing housing into the lock housing and assemble upper snap ring. Fasten bearing housing to lock housing.

CAUTION: Do not hammer the shaft into the bearing or the bearing onto shaft.

(3) Install the ignition key lamp assembly on the bearing housing (Fig. 7).

(4) Install the turn signal switch on the bearing housing. Feed the wires from the turn signal switch and the key lamp through the opening between the bearing housing and lock housing and down along the bottom of the jacket.

(5) Install the bearing retaining plate and tighten three screws to 24 in. lbs. (3 N·m). Make sure that the ground wires from the turn signal switch assembly are positioned toward the ground clips before tightening (Fig. 6).

(6) Attach the ground clips for the turn signal switch and the key lamp to bearing retaining plate.

(7) Assemble the wiper switch, shaft, cover or speed control switch, hider, and knob (Fig. 5).

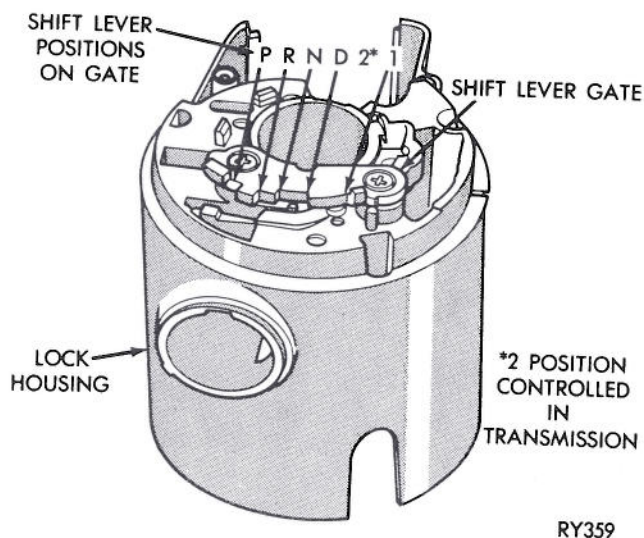


Fig. 20—Lock Housing and Shift Gate

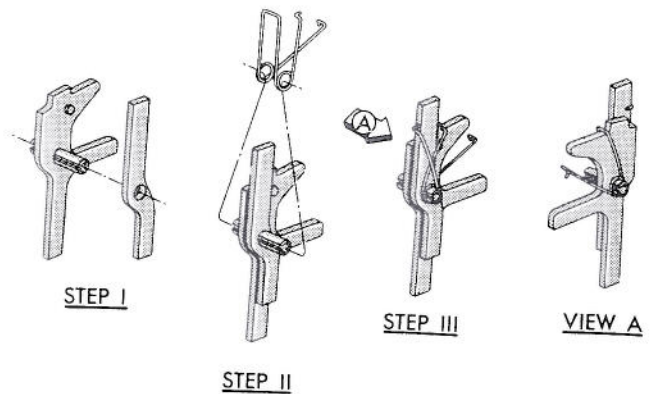


Fig. 21—Lock Levers and Spring Assembly

(8) Place the wash/wipe switch assembly into the lock housing, feeding the wires through the lock housing and shift housing and fasten the turn signal switch.

(9) Install the dimmer switch actuator rod up through the housings and into the pocket in the wash/wipe switch.

(10) Compress the dimmer switch until two .093 inch drill shanks can be inserted into the two alignment holes. With one end of the rod in the wash/wipe switch and the other end of the rod in the dimmer switch, apply a slight upward pressure and fasten the dimmer switch to its bracket. Remove the drill shanks.

(11) Install turn signal lever cover.

(12) Install breakaway capsules.

(13) Install wiring trough in place over wires, being careful not to pinch wires between trough and jacket. Install new retainers if required.

Installation (Fig. 1)

(1) Install ground clip on left capsule slot (Fig. 22). Plastic capsules should be preassembled in

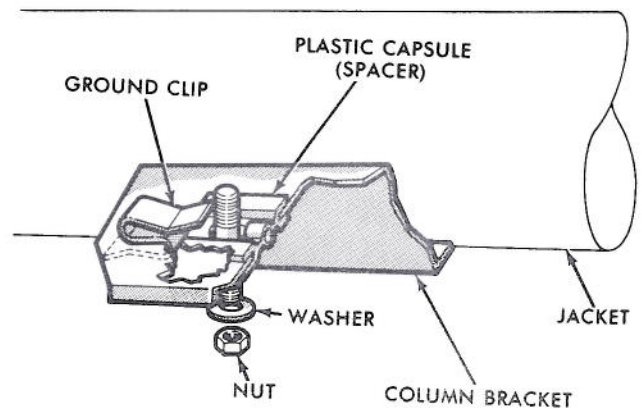


Fig. 22—Ground Clip and Spacer Installation